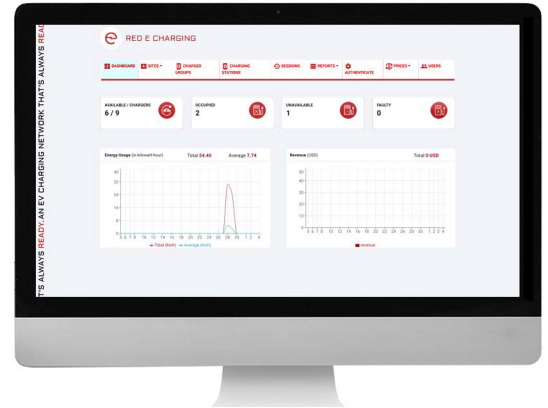




RED E Enterprise Administrator Features

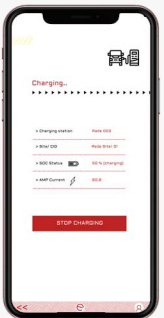
- Charging Station Management**
 - Assign devices and settings to locations and sublocations
- Control Charging Time**
 - Set charging station hours of operation
 - Set separate availability schedules for weekdays and weekends
- Access Control**
 - Grant charging station access to authorized users and manage access at location level
- Reports**
 - Daily and monthly consumption reports by user, charging station, location, company
 - Review active charging sessions
 - Run session history reports by station and user
 - Review real-time consumption for each location
 - Export reports in PDF, XLSX, CSV customizable usage reports
 - Map of sites
 - Charger uptime
 - Parking/idle time and buffer time management
 - Tax Management
 - First come first serve and equal distribution load management
 - Dashboard with quick view
 - Petroleum displacement report
 - Greenhousegas savings report
- Pricing and Payments**
 - Set pricing by kWh, session, hour or any combination thereof
 - Integrated pay for parking collection
 - Payment collection in app
 - Generate custom usage reports & export data for invoicing
- Administrator Dashboard Access**
 - Grant users access to specific locations and devices
 - Administrator access level control
- Reseller Dashboard and Whitelabeling**
 - Resellers can manage stations on behalf of their customers
 - Brand dashboard with any company logo and email
 - Create a unique company URL (e.g. https:// company.juice.net) for each end customer
- Automated Load Balancing**
 - Limit maximum power load for each location or group of charging stations
 - Monitor current load
 - Review maximum load per location and per day
- Troubleshooting Tools**
 - Review state of the charging station: status, temperature, voltage, kW, amperage
 - View logs and events for each charging station

RED E WAS BUILT BY EV DRIVERS FOR EV DRIVERS WITH THE AIM OF MAKING CHARGING AS FAST, EASY, AND TRANSPARENT AS POSSIBLE



Driver Features

- Start charging using mobile app
- Review current session status
- Review history and cost of sessions
- Charging start and stop notifications
- App available for iOS and Android
- Payment via app or direct through web-page



AN EV CHARGING NETWORK THAT'S ALWAYS READY

RED E is a registered trademark of Red E Charging, a HAGE Automotive Group company. Other product and company names mentioned herein may be trademarks or trade names of their respective owners.

*Certifications and registrations are anticipated and subject to change.